



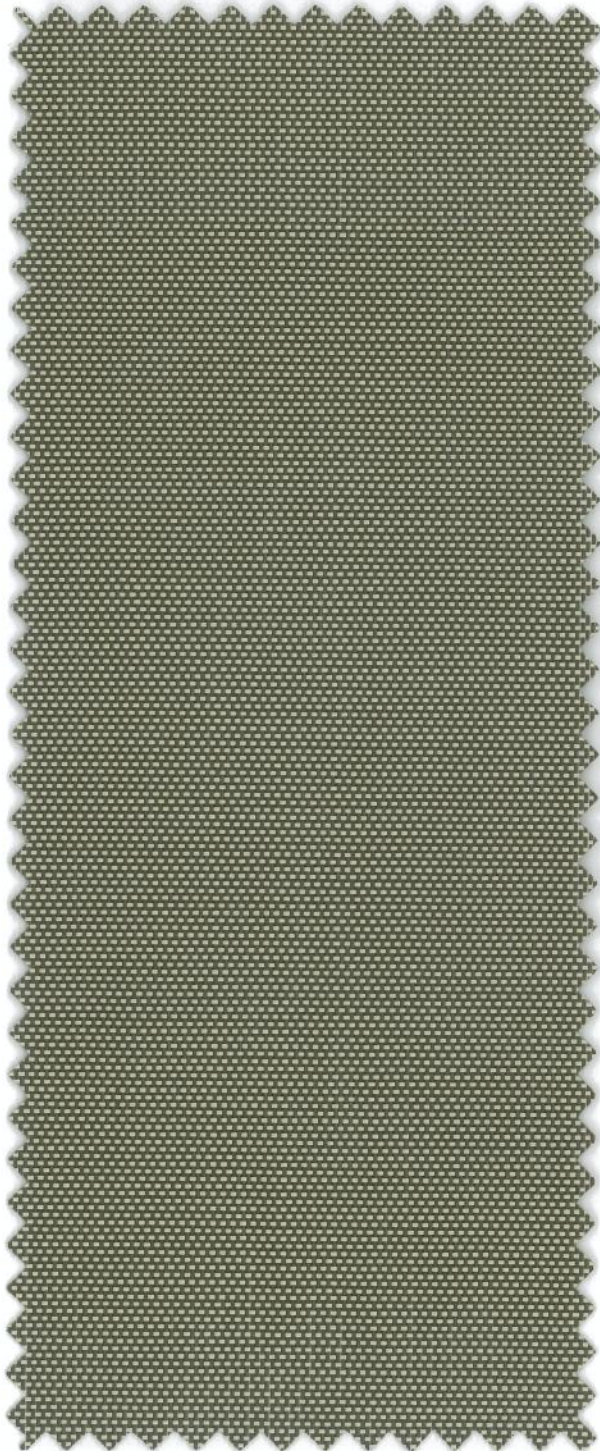
Zip Tex
Fabric Options



Vienne

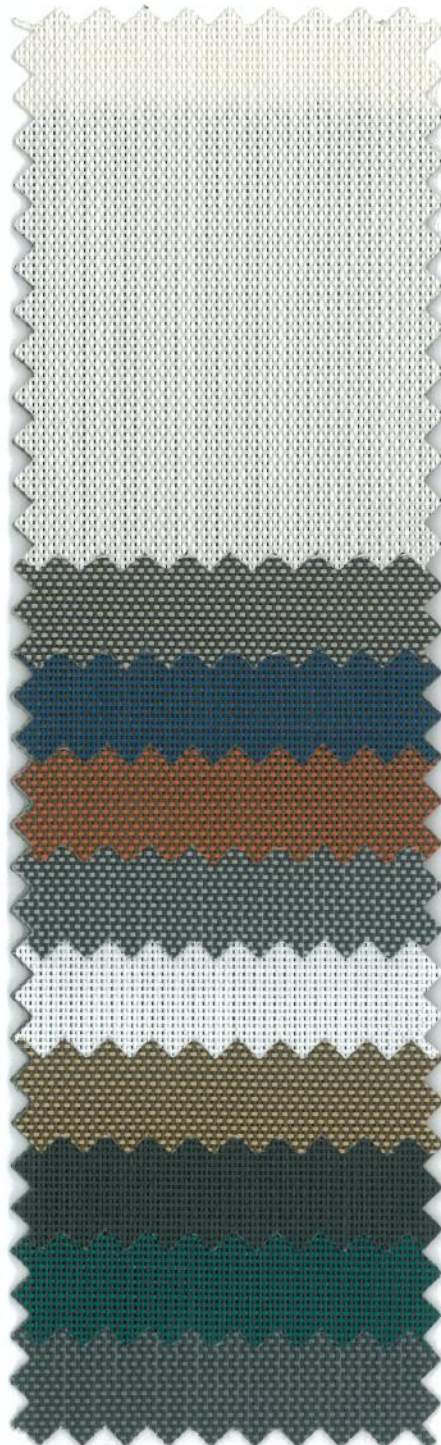
Transparent | 10% Openness

MERMET



0623

Bronze/Straw



0220
White/Linen

3010
Charcoal/Sable

3044
Charcoal/Denim

0609
Bronze/
Mandarin

3007
Charcoal/Pearl

0202
White/White

0671
Bronze/Apricot

3030
Charcoal/Charcoal

3057
Charcoal/Pine

3001
Charcoal/Grey

Vienne



Specifications

Product Type:	Exterior / Interior - Transparent	Width:	98.4" (250cm)
Composition:	42% Fiberglass / 58% Vinyl	Weight:	10.4 oz / yd2 (352 g / m2) ± 5%
Breaking Strength:	Warp > 480 / Weft > 495 (lbs)	Thickness:	.021" (0.53 mm) ± 5%
Standard Packaging:	Rolls of 30 ly (27 lm)	Yarn Count:	Warp / 36 Weft / 25 (ends per inch)

Fenestration Properties:

Openness Factor* 10% UV Blockage: Approximately 90%

Item #	Style Name	Ts	Rs	As	Tv	SC (External)		SC (Internal)	
						1/4" CI	1/4" HA	1/4" CI	1/4" HA
0623	Bronze/Straw	10	21	69	15	0.18	0.17	0.61	0.46
0220	White/Linen	26	56	18	28	0.29	0.27	0.42	0.37
3010	Charcoal/Sable	11	16	73	15	0.2	0.19	0.64	0.48
3044	Charcoal/Denim	9	12	79	13	0.18	0.18	0.66	0.49
0609	Bronze/Mandarin	12	18	70	15	0.2	0.19	0.63	0.47
3007	Charcoal/Pearl	10	14	76	15	0.19	0.18	0.65	0.48
0202	White/White	27	60	13	29	0.29	0.27	0.4	0.35
0671	Bronze/Apricot	11	16	73	14	0.2	0.19	0.64	0.48
3030	Charcoal/Charcoal	8	6	86	13	0.18	0.17	0.69	0.51
3057	Charcoal/Pine	9	8	83	14	0.19	0.18	0.68	0.5
3001	Charcoal/Grey	9	10	81	14	0.19	0.18	0.67	0.5

Solar Transmittance (Ts), Solar Reflectance (Rs), Solar Absorptance (As), Visible Light Transmittance (Tv) and Openness Factor (OF), Shading Coefficient (SC), Clear Plate (CI), Heat Absorbing, Plate (HA).

The fenestration property tests were conducted in accordance with ASHRAE Standard 74-1988 "Methods of Solar Optical Properties of Materials". The above data is indicative. For current test results, performance specifications and larger samples, contact the Mermet Marketing Department.

*Please note that the Openness Factor is an approximation and may vary from color to color in the same fabric due to the color and manufacturing process.

Applications:



Roller Shades



Roman Shades



Panel Tracks



Skylight Shades



Tensile Structures

Fire Classifications:

NFPA 701-04 TM#1, California U.S. Title 19.

Fabrication Methods:

- Cutting: Cold Cut, Ultrasonic, Crush Cut, or Laser
- Seaming / Hemming: Thermal, High-Frequency, Ultrasonic, or Sewing

Bacterial and Fungal Resistance: ASTM G21

Care and Cleaning:

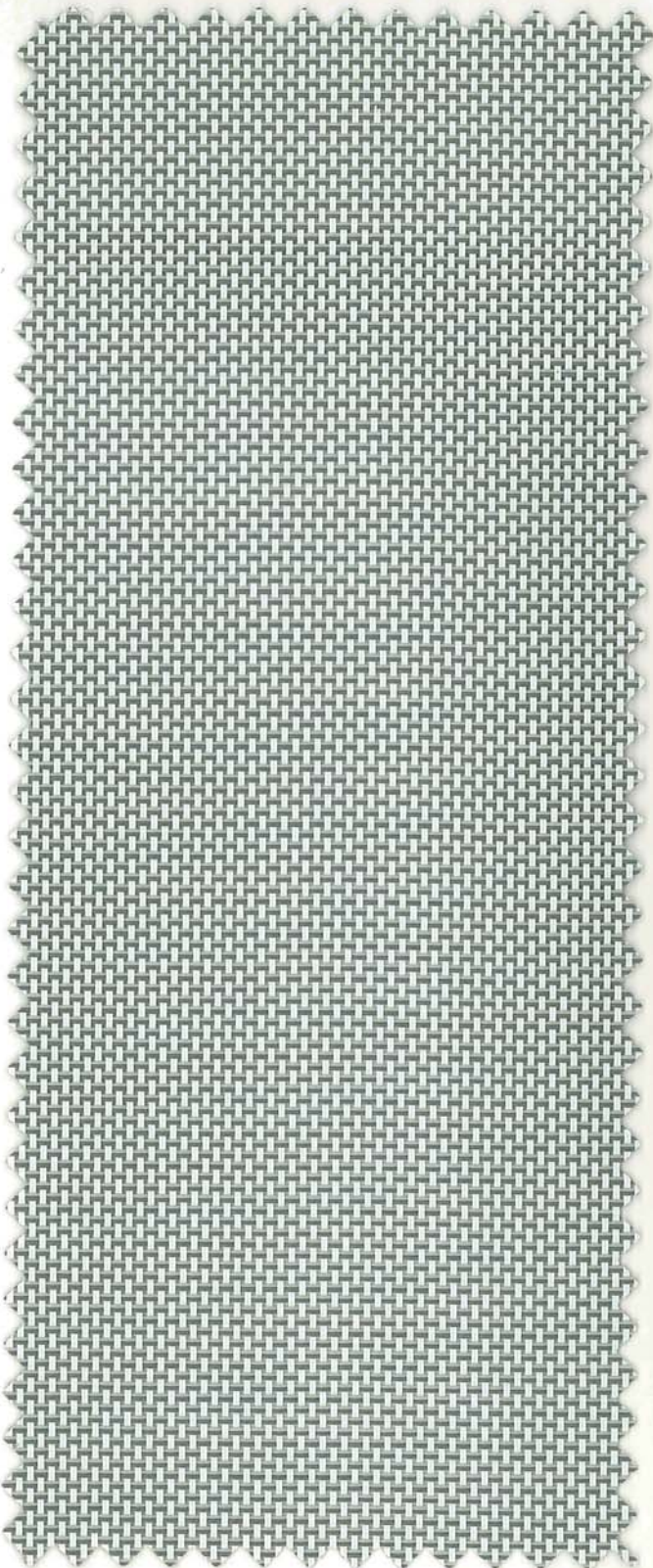
Remove dust with vacuum cleaner or compressed air. Do not scrub. Do not use solvents or any abrasive substance which might damage the coating of the fabric. Clean with a sponge or a soft brush dipped in soapy water using mild detergent. Rinse with clean water. Leave the shade down until completely dry. You can also rub the fabric very gently with a clean white pencil eraser to remove small stains.

5970 N. Main Street • Cowpens, SC 29330
Sales Department: Ph (866) 902-9647 • Fx (866) 902-8522
 info@mermetusa.com • www.mermetusa.com

March 2010

Natte

Transparent | 12% Openness



M126

White/Pearl - Grey



3006
Charcoal/Bronze

0225
White/Mustard

0625
Bronze/Mustard

0601
Bronze/Grey

0606
Bronze/Bronze

0222
White/Stone

M125
Bronze/Cocoa-Mandarin

3030
Charcoal/Charcoal

0607
Bronze/Pearl

3058
Charcoal/Fern

Specifications

Product Type:	Exterior / Interior - Transparent	Width:	98.4" (250cm)
Composition:	42% Fiberglass / 58% Vinyl	Weight:	13.9 oz / yd ² (470 g / m ²) ± 5%
Breaking Strength:	Warp > 480 / Weft > 495 (lbs)	Thickness:	.021" (0.53 mm) ± 5%
Standard Packaging:	Rolls of 55 ly (50 lm)	Yarn Count:	Warp / 36 Weft / 36 (ends per inch)

Fenestration Properties: Openness Factor* 12% UV Blockage: Approximately 88%

Item #	Style Name	Ts	Rs	As	Tv	SC (External)		SC (Internal)	
						1/4" CI	1/4" HA	1/4" CI	1/4" HA
M126	White/Pearl-Grey	20	40	40	23	0.25	0.23	0.51	0.41
3006	Charcoal/Bronze	12	7	81	18	0.22	0.21	0.69	0.51
0225	White/Mustard	21	52	27	24	0.25	0.23	0.44	0.37
0625	Bronze/Mustard	15	25	60	20	0.22	0.21	0.59	0.45
0601	Bronze/Grey	13	14	73	18	0.22	0.21	0.65	0.49
0606	Bronze/Bronze	12	8	80	19	0.22	0.21	0.69	0.51
0222	White/Stone	27	52	21	29	0.3	0.28	0.45	0.38
M125	Bronze/Cocoa-Mandarin	14	14	72	19	0.23	0.21	0.66	0.49
3030	Charcoal/Charcoal	13	5	82	20	0.23	0.22	0.71	0.52
0607	Bronze/Pearl	14	20	66	18	0.22	0.21	0.62	0.47
3058	Charcoal/Fern	12	9	79	18	0.23	0.22	0.68	0.5

Solar Transmittance (Ts), Solar Reflectance (Rs), Solar Absorptance (As), Visible Light Transmittance (Tv) and Openness Factor (OF), Shading Coefficient (SC), Clear Plate (CI), Heat Absorbing, Plate (HA).

The fenestration property tests were conducted in accordance with ASHRAE Standard 74-1988 "Methods of Solar Optical Properties of Materials". The above data is indicative. For current test results, performance specifications and larger samples, contact the Mermet Marketing Department.

*Please note that the Openness Factor is an approximation and may vary from color to color in the same fabric due to the color and manufacturing process.

Applications:



Roller Shades



Roman Shades



Panel Tracks



Skylight Shades



Tensile Structures

Fire Classifications:

NFPA 701-99 TM#1, California U.S. Title 19.

Fabrication Methods:

- Cutting: Cold Cut, Ultrasonic, Crush Cut, or Laser
- Seaming / Hemming: Thermal, High-Frequency, Ultrasonic, or Sewing

Bacterial and Fungal Resistance: ASTM G21

Care and Cleaning:

Remove dust with vacuum cleaner or compressed air. Do not scrub. Do not use solvents or any abrasive substance which might damage the coating of the fabric. Clean with a sponge or a soft brush dipped in soapy water using mild detergent. Rinse with clean water. Leave the shade down until completely dry. You can also rub the fabric very gently with a clean white pencil eraser to remove small stains.

Satine

Transparent | 5% Openness



3006

Charcoal/Bronze



0610
Bronze/Sable

0606
Bronze/Bronze

0223
White/Straw

0202
White/White

0210
White/Sable

3030
Charcoal/Charcoal

3001
Charcoal/Grey

Satine



Specifications

Product Type:	Exterior / Interior - Transparent	Width:	98.4" (250cm)
Composition:	42% Fiberglass / 58% Vinyl	Weight:	15.8 oz / yd ² (535 g / m ²) ± 5%
Breaking Strength:	Warp > 480 / Weft > 495 (lbs)	Thickness:	.030" (0.78 mm) ± 5%
Standard Packaging:	Rolls of 55 ly (50 lm)	Yarn Count:	Warp / 46 Weft / 36 (ends per inch)

Fenestration Properties:

Openness Factor* 5% UV Blockage: Approximately 95%

Item #	Style Name	Ts	Rs	As	Tv	SC (External)		SC (Internal)	
						1/4" CI	1/4" HA	1/4" CI	1/4" HA
3006	Charcoal/Bronze	6	7	87	9	0.16	0.16	0.68	0.5
	Dark Side	6	6	88	9	0.16	0.16	0.69	0.5
0610	Bronze/ Sable	6	23	71	8	0.14	0.14	0.58	0.45
	Dark Side	6	16	78	8	0.15	0.15	0.63	0.47
0606	Bronze/Bronze	6	8	86	10	0.16	0.16	0.68	0.5
0223	White/Straw	18	53	29	19	0.22	0.2	0.42	0.37
	Light Side	18	57	25	19	0.21	0.2	0.4	0.35
0202	White/White	22	62	16	23	0.24	0.23	0.37	0.34
0210	White/Sable	17	48	35	18	0.21	0.2	0.45	0.38
	Light Side	17	53	30	18	0.21	0.19	0.42	0.36
3030	Charcoal/Charcoal	6	5	89	9	0.16	0.16	0.69	0.51
3001	Charcoal/Grey	7	13	80	10	0.16	0.16	0.65	0.48
	Dark Side	7	9	84	10	0.17	0.16	0.67	0.5

Solar Transmittance (Ts), Solar Reflectance (Rs), Solar Absorptance (As), Visible Light Transmittance (Tv) and Openness Factor (OF), Shading Coefficient (SC), Clear Plate (CI), Heat Absorbing, Plate (HA).

The fenestration property tests were conducted in accordance with ASHRAE Standard 74-1988 "Methods of Solar Optical Properties of Materials". The above data is indicative. For current test results, performance specifications and larger samples, contact the Mermet Marketing Department.

*Please note that the Openness Factor is an approximation and may vary from color to color in the same fabric due to the color and manufacturing process.

Applications:



Roller Shades



Roman Shades



Panel Tracks



Skylight Shades



Tensile Structures

Fire Classifications:

NFPA 701-99 TM#1, California U.S. Title 19.

Fabrication Methods:

- Cutting: Cold Cut, Ultrasonic, Crush Cut, or Laser
- Seaming / Hemming: Thermal, High-Frequency, Ultrasonic, or Sewing

Bacterial and Fungal Resistance: ASTM G21

Care and Cleaning:

Remove dust with vacuum cleaner or compressed air. Do not scrub. Do not use solvents or any abrasive substance which might damage the coating of the fabric. Clean with a sponge or a soft brush dipped in soapy water using mild detergent. Rinse with clean water. Leave the shade down until completely dry. You can also rub the fabric very gently with a clean white pencil eraser to remove small stains.



5970 N. Main Street • Cowpens, SC 29330
Sales Department: Ph (866) 902-9647 • Fx (866) 902-8522
 info@mermetusa.com • www.mermetusa.com

March 2010

SOLTIS® 86

■ Unique shade fabrics with stability and a view

Soltis® textiles offer the best of both worlds under the sun. Keeping your view of the outside world as well as reducing your interior cooling costs. With the increase of energy prices, people across the world are protecting their internal environment with the use of Soltis® products.

Manufactured according to the exclusive Précontraint® Ferrari® patented technology, Soltis® textiles are maintained under tension during the whole production process. The result is a very important dimensional stability of Soltis® textiles which do not sag during installation procedure or intensive uses.

Metallic colors



86-2046 **New** 86-3046*



86-2048



86-2078



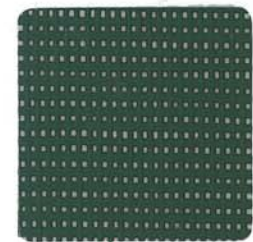
86-2040



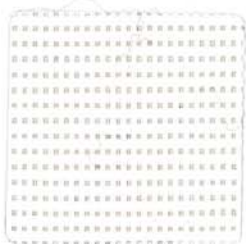
86-2045 **New** 86-3045*



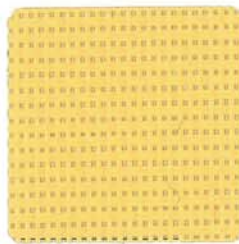
86-2043 **New** 86-3043*



86-2035



86-2044 **New** 86-3044*



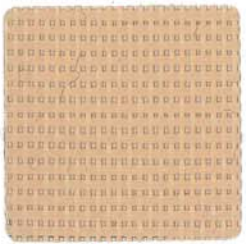
86-2006



86-2024



86-2027



86-2002 **New** 86-3002*



86-2003 **New** 86-3003*



86-2012 **New** 86-3012*



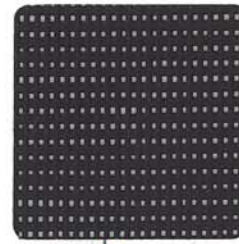
86-2030



86-2011



86-2069



86-2047 **New** 86-3047*



86-2053 **New** 86-3053*

SOLTIS® 92

Metallic and interferential colors



92-2046**



92-2074



92-2048**



92-2045**



92-2044**



92-2065 interferential
red/green



92-2070 interferential
grey/blue



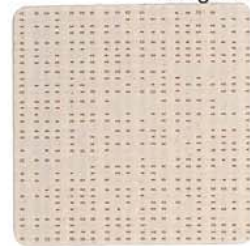
92-2089



92-2088



92-2002**



92-2003**



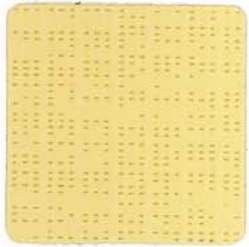
92-2012**



92-2090



92-2039



92-2006**



92-2024**



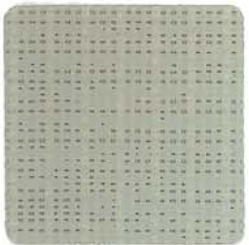
92-2025



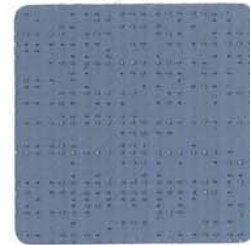
92-2027**



92-2035**



92-2016



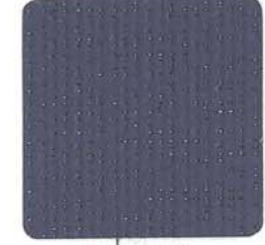
92-2021



92-2031



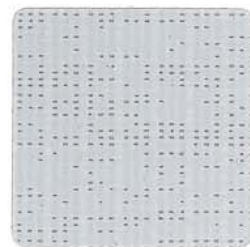
92-2030**



92-2040**



92-2010



92-2011**



92-2069**



92-2047**



92-2053**

Solar protection

SOLTIS® 86 & 92

Technical properties	Soltis® 86	Soltis® 92	Standards
Weight	11.2 oz/sqyd	12.4 oz/sqyd	EN ISO 2286-2
Thickness	430 microns	450 microns	
Roll width New roll-width	69.7 inches 106.3 inches	69.7 inches	
Tensile strength (warp/weft)	230/160 daN / 5 cm	310/210 daN / 5 cm	EN ISO 1421
Tear strength (warp/weft)	45/20 daN	40/20 daN	DIN 53.363
Flame retardancy	CLASSE A/ASTM E84 • TEST 1/NFPA 701 • CSFM T19 • M1/NFP 92-507 • B1/DIN 4102-1 • BS 7837 • B1/ONORM B 3800-1 • CLASSE 1/UNI 9177 • M1/UNE 23.727 • VKF 5.2/SN 198898 (86) • VKF 5.3/SN 198898 (92) • B-s2,d0/EN 13501-1		
Euroclass			
Roll lengths 69.7 inches wide 106.3 inches wide	50 lm 40 lm	50 lm	
Quality management system			ISO 9001
Environmental management system			ISO 14001

The technical data shown here are average values, given for information only, and may be modified.

www.soltis-textiles.com

By visiting you will be able to download project information, technical data, and many more things. All in real time.



Sustainable development

Ferrari® development is based on strict adherence to good safety and environmental practices, that include an understanding of Life Cycle Analysis (LCA), selection of the best materials, and eco-design. The Company obtained its first ISO 14001 certification in 2003.

100% recyclable

Ferrari® developed the Taxyloop® technology specifically for the recycling of composite PVC membranes and textiles. Through the management of its end-of-life products Ferrari® is committed to sustainable development. www.taxyloop.com

Specification service

The Ferrari® specification service is available to inform you, advise you and suggest innovative solutions for your specific requirements.

To detail your project, visit: www.soltis-textiles.com
Come and fill out our project detail form.

CSI Specifications Available

FERRARI



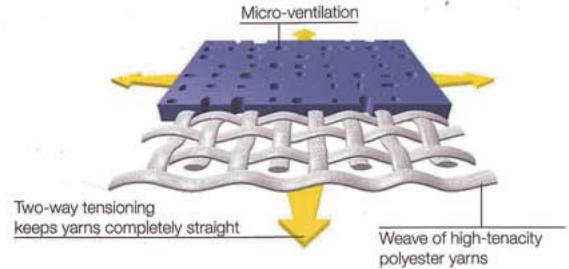
Solar and light properties (according to ASHRAE 74-1988)



Reference	TS	RS	AS	TV	FS ext. 1/4' CL	FS int. 1/4' CL	NCS Code
86-2002	24	45	31	22	0.28	0.47	2010 Y 30 R
86-2003	22	42	36	21	0.27	0.48	2005 Y 50 R
86-2006	29	56	15	26	0.31	0.40	0030 Y 10R
86-2011	19	34	47	19	0.25	0.53	2502 B
86-2012	24	41	35	19	0.29	0.50	4010 Y 30 R
86-2024	30	48	22	23	0.33	0.46	0765 Y 17 R
86-2027	26	41	33	19	0.30	0.50	1473 Y 95 R
86-2030	23	19	58	20	0.30	0.64	5050 R 70 B
86-2035	19	18	63	19	0.27	0.64	4837 B 77 G
86-2040	16	11	73	18	0.25	0.68	6020 R 90 B
86-2043	14	9	77	17	0.23	0.69	7404 Y 51 R
86-2044	30	56	14	26	0.32	0.41	0501 Y 17 R
86-2045	18	24	58	21	0.25	0.60	/
A 86-2046	19	37	44	19	0.25	0.51	/
B 86-2046	19	54	27	19	0.23	0.40	/
86-2047	13	6	81	16	0.23	0.71	/
86-2048	20	34	46	21	0.26	0.53	/
86-2053	15	4	81	18	0.25	0.73	S 8500 N
86-2069	16	18	66	18	0.24	0.64	S 4502 B
86-2077	18	37	45	17	0.24	0.51	/
86-2078	22	35	43	21	0.28	0.53	/
92-2002	10	55	35	6	0.14	0.37	2010 Y 30 R
92-2003	10	51	39	6	0.15	0.40	2005 Y 50 R
92-2006	14	70	16	8	0.16	0.28	0030 Y 10 R
92-2010	10	57	33	7	0.14	0.36	1502 B
92-2011	7	42	51	5	0.13	0.45	2502 B
92-2012	12	50	38	4	0.17	0.41	4010 Y 30 R
92-2016	11	48	41	5	0.16	0.42	3010 G 30 Y
92-2021	9	34	57	5	0.16	0.51	4030 R 90 B
92-2024	19	61	20	10	0.22	0.35	0765 Y 17 R
92-2025	15	51	34	5	0.19	0.41	2060 Y 40 R
92-2027	14	51	35	5	0.18	0.41	1473 Y 95 R
92-2030	7	26	67	4	0.15	0.56	5050 R 70 B
92-2031	10	31	59	6	0.17	0.53	3060 R 80 B
92-2035	5	22	73	4	0.14	0.58	4837 B 77 G
92-2039	3	7	90	4	0.13	0.68	8010 B 90 G
92-2040	3	13	84	4	0.13	0.64	6020 R 90 B
92-2043	4	10	86	4	0.14	0.66	7404 Y 51 R
92-2044	18	66	16	12	0.20	0.31	0501 Y 17 R
92-2045	5	29	66	6	0.13	0.54	/
A 92-2046	7	40	53	5	0.13	0.47	/
B 92-2046	7	52	41	5	0.12	0.38	/
92-2047	3	6	91	3	0.14	0.69	/
92-2048	6	40	54	5	0.12	0.46	/
92-2053	4	4	92	4	0.15	0.71	8500 N
92-2065	6	42	52	6	0.12	0.45	/
92-2069	5	20	75	5	0.14	0.60	4502 B
92-2070	3	34	63	5	0.10	0.50	/
A 92-2074	4	32	64	4	0.11	0.51	/
B 92-2074	4	21	75	4	0.13	0.59	/
92-2088	7	40	53	5	0.13	0.47	/
92-2089	9	40	51	6	0.15	0.47	/
92-2090	4	11	85	4	0.14	0.66	7020 Y 40 R

TS: Solar Transmission in %
 RS: Solar Reflection in %
 AS: Solar Absorption in %
 TS + RS + AS = 100% of incident energy
 TV: Visible light Transmittance in %
 FS ext.: external Solar Factor
 FS int.: internal Solar Factor
 1/4' CL: clear plate, thickness 6.4 mm (measured by Matrix Inc. U.S.A.
 according to ASHRAE 74-1988)
 A: aluminum side exposed to the sun
 B: color side exposed to the sun

The exclusive **Précontraint®** **Ferrari®** technology



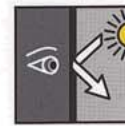
Made using the exclusive and patented Ferrari® Précontraint® technology; Soltis® textiles are manufactured under equal tension throughout the manufacturing cycle.

This value added benefit allows the textile to keep its shape and form when in constant daily use. Providing users with a product that combines strength with a lightweight product.

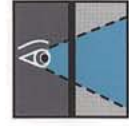
Technical features **SOLTIS® 86 & 92**



Thermal comfort



Visual comfort



Visibility toward the outside



Tear resistance



Won't sag



Space-saving



Long life



Easy maintenance



Flame retardant



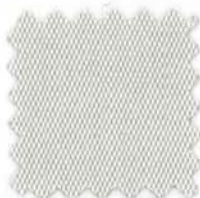
100%
recyclable textile



Safety
textile



4604-0000
NATURAL



4651-0000
SILVER



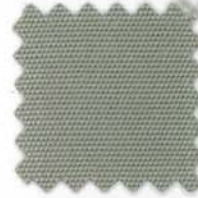
4642-0000
OYSTER



4683-0000
PARCHMENT



4633-0000
LINEN



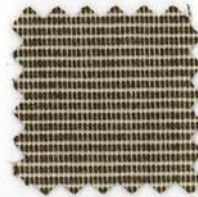
4630-0000
CADET GREY



4672-0000
HEATHER BEIGE



4676-0000
COCOA



4654-0000
LINEN TWEED



4620-0000
BEIGE



4648-0000
TAUPE



4644-0000
CHARCOAL GREY



4628-0000
TOAST



4674-0000
WHEAT



4625-0000
GOLD (NEW)



4635-0000
BUTTERCUP



4602-0000
SUNFLOWER YELLOW



4619-0000
PUMPKIN (NEW)



4609-0000
ORANGE



4677-0000
TUSCAN



4689-0000
RUST



4686-0000
NUTMEG



4627-0000
SALMON



4616-0000
MOCHA TWEED



4614-0000
TAN



4621-0000
TRUE BROWN



4618-0000
WALNUT BROWN TWEED



4667-0000
MAHOGANY



4622-0000
TERRACOTTA



4666-0000
LOGO RED



4603-0000
JOCKEY RED



4631-0000
BURGUNDY



4606-0000
DUBONNET TWEED



4640-0000
BLACK CHERRY



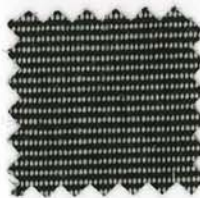
4608-0000
BLACK



4665-0000
CONCORD



4615-0000
SMOKE (NEW)



4607-0000
CHARCOAL TWEED



4684-0000
SLATE



4626-0000
NAVY



4646-0000
CAPTAIN NAVY



4678-0000
MARINE BLUE



4617-0000
ROYAL BLUE TWEED



4601-0000
PACIFIC BLUE



4679-0000
OCEAN BLUE



4653-0000
MED. BLUE TWEED



4652-0000
MEDITERRANEAN BLUE



4641-0000
SAPPHIRE BLUE



4675-0000
CAPRI



4624-0000
SKY BLUE



4673-0000
SPA



4668-0000
ASPEN



4688-0000
BASIL



4671-0000
FERN



4685-0000
GINGKO



4692-0000
PALM



4691-0000
DEEP SEA



4610-0000
TURQUOISE



4612-0000
ARUBA (NEW)



4623-0000
AQUAMARINE



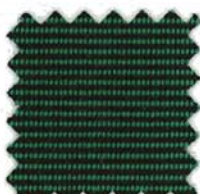
4643-0000
PERSIAN GREEN



4600-0000
ERIN GREEN



4645-0000
SEAGRASS GREEN



4605-0000
HEMLOCK TWEED



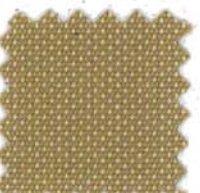
4637-0000
FOREST GREEN



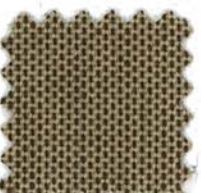
4656-0000
SPRUCE GREEN



4695-0000
TRESKO LINEN



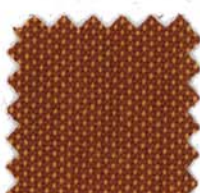
4658-0000
TRESKO BRASS



4696-0000
TRESKO BIRCH



4697-0000
TRESKO GINGER



4698-0000
TRESKO CLAY



4655-0000
ALPINE



4699-0000
TRESKO BRICK



4862-0000
SILICA SILVER



4859-0000
SILICA DUNE



4858-0000
SILICA BARLEY



4860-0000
SILICA SESAME



4861-0000
SILICA STONE